



PSI Services, LLC  
 3210 E Tropicana  
 Las Vegas, NV 89121  
 www.psiexams.com



**PROFESSIONAL LICENSING BOARDS DIVISION  
 GEORGIA LANDSCAPE ARCHITECT LICENSURE EXAMINATION  
 CANDIDATE INFORMATION BULLETIN**



Examinations by PSI Services, LLC .....	1	Examination Site Locations.....	3
Guidelines for License Application/Qualification.....	1	Reporting to the Examination Site.....	3
Examination Registration and Scheduling Procedures ....	1	Required Identification .....	3
Eligibility and Fees.....	1	Security Procedures .....	3
Internet Registration .....	1	Taking the Examination by Computer .....	4
Telephone Registration .....	1	Identification Screen.....	4
Fax Registration.....	2	Tutorial.....	4
Standard Mail Registration.....	2	Examination Question Example.....	4
Canceling an Examination .....	2	Examination Review .....	4
Missed Appointment or Late Cancellation.....	2	Score Reporting .....	4
Scheduling a Re-examination .....	2	Tips for Preparing for your License Examination .....	5
Special Examination Arrangements .....	2	Sample Questions.....	5
Emergency Examination Center Closing .....	2	Examination Content Outline .....	5
Veteran Reference Points.....	2	Examination Registration Form.....	End of Bulletin

Please refer to our website to check for the most updated information at [www.psiexams.com](http://www.psiexams.com)

## EXAMINATIONS BY PSI

This Candidate Information Bulletin provides you with information about the examination and application process for becoming licensed as a landscape architect in the State of Georgia.

Georgia State law requires landscape architects to be licensed and regulated by the Professional Licensing Board. Eligibility for examination is determined by the Board.

The Board has contracted with PSI Services, LLC (PSI) to conduct the Georgia State Component examination. PSI provides examinations through a network of computer examination centers in Georgia. PSI works closely with the State to be certain that examinations meet local as well as national requirements in basic principles and examination development standards.

Be advised that prior approval by the Georgia State Board of Landscape Architects is required before taking any portion of the examination.

Your Application for Registration as a Landscape Architect by Examination must be submitted and approved by the Board prior to sitting for any portion of the examination.

Refer to Board Rule Chapter 310-2, Applications and Examinations. Rule 310-2-.01(1)(a) and Rule 310-2.03(3) require that each applicant sitting for the examination must obtain written approval from the Board prior to taking any portion (written and/or computer based) of any examination offering that occurs at any time during the year.

The Georgia law and Board rules are available for review online at: <http://www.sos.state.ga.us/plb/landscape>

### HOW TO OBTAIN A LICENSE

1. Please request the appropriate application by accessing the Board. All questions about applications for licensure should be directed here.

Professional Licensing Boards Division  
Georgia State Board of Landscape Architects  
237 Coliseum Drive  
Testing Center, Building B  
Macon, GA 31217-3858  
(478) 207-1460.

[www.sos.state.ga.us/plb/landscape](http://www.sos.state.ga.us/plb/landscape)

2. Board staff will process your Georgia State Component examination application for eligibility. If approved by the Board, you will be notified how to contact PSI for registration.

### **IMPORTANT**

In addition to meeting other Board requirements, candidates for licensure are required to pass the LARE and the Georgia State Component Examination. The LARE examination content and format are described more fully in the CLARB Pre-Exam Orientation Information booklet. A schedule for the examination administration can be found at [www.clarb.org](http://www.clarb.org).

All questions and requests for information about examinations

should be directed to PSI.

PSI Services, LLC  
3210 E Tropicana  
Las Vegas, NV 89121  
(800) 733-9267 • Fax (702) 932-2666  
[www.psiexams.com](http://www.psiexams.com)

## EXAMINATION REGISTRATION AND SCHEDULING PROCEDURES

### FEES

The following fee table lists the applicable fee for the examination. The fee is for each registration, whether you are taking the examination for the first time or repeating.

EXAMINATION FEE	
Examination Fee	\$85

**NOTE: REGISTRATION FEES ARE NOT REFUNDABLE OR TRANSFERABLE**

### INTERNET REGISTRATION

For the fastest and most convenient test scheduling process, PSI recommends that candidates register for their exams using the Internet. In order to register over the Internet, candidates will need to have a valid MasterCard or Visa. Candidates register online by accessing PSI's registration website at [www.psiexams.com](http://www.psiexams.com). Internet registration is available 24 hours a day. In order to register by Internet, complete the steps below. For internet registration, you will need a valid VISA or MasterCard.

1. Log onto PSI's website and complete the associated registration form online and submit your information to PSI via the Internet.
2. Upon completion of the online registration form, you will be given the available exam dates and locations for scheduling your examination. Select your desired testing date

### TELEPHONE REGISTRATION

The second fastest method of scheduling is via the telephone with PSI's Interactive Voice Response system (IVR) during non-business hours or through live registrars during business hours. For telephone registration, you will need a valid VISA or MasterCard.

Complete the Examination Registration Form, including your credit card number and expiration date, so that you will be prepared with all of the information needed to register by telephone.

Call (800) 733-9267, 24 hours a day and register using the Automated Registration System. Otherwise, PSI registrars are available Monday through Friday, between 7:30 am and 8:00 pm and Saturday, between 11:00 am and 5:00 pm, Eastern Time, to receive the information listed on your Examination



Registration Form and schedule your appointment for the examination.

### FAX REGISTRATION

For Fax registration, you will need a valid VISA or MasterCard.

Complete the Examination Registration Form, including your credit card number and expiration date.

1. Fax the completed form to PSI (702) 932-2666. Fax registrations are accepted 24 hours a day.
2. If your information is incomplete or incorrect, it will be returned for correction.

Please allow 4 business days to process your Registration. After 4 business days, you may call PSI to schedule the examination, (800) 733-9267.

### STANDARD MAIL REGISTRATION

For those desiring to make payment for their examination using cashiers checks or money orders, or for those that simply do not wish to provide credit card information over the phone or Internet, you must use the Standard Mail Registration. In order to register, please follow the steps below.

1. Complete the PSI registration Form, and appropriate examination fee to PSI. Payment of fees can be made by money order or cashier's check. Money orders or cashier's checks should be made payable to PSI. Print your ID number on your cashier's check or money order to ensure that your fees are properly assigned. **CASH, COMPANY CHECKS, PERSONAL CHECKS ARE NOT ACCEPTED.**

PSI Services, LLC  
3210 E Tropicana  
Las Vegas, NV 89121  
(800) 733-9267 • Fax (702) 932-2666  
[www.psiexams.com](http://www.psiexams.com)

BE SURE TO READ ALL DIRECTIONS CAREFULLY BEFORE COMPLETING THE EXAMINATION REGISTRATION FORMS. IMPROPERLY COMPLETED FORMS WILL BE RETURNED TO YOU UNPROCESSED.

2. If your application or fees are not correct, we will return them to you immediately with instructions on correct application procedures.
3. Please allow 2 weeks to process your Registration. After 2 weeks, you may call PSI to schedule the examination after 7:30 a.m., Eastern Time, (800) 733-9267.

### CANCELING AN EXAMINATION APPOINTMENT

You may cancel and reschedule an examination appointment without forfeiting your fee if your *cancellation notice is received 2 days before the scheduled examination date*. For example, for a Monday appointment, the cancellation notice would need to be received on the previous Saturday. You may call PSI at (800) 733-9267. Please note that you may also use the automated system, using a touch-tone

phone, 24 hours a day in order to cancel and reschedule your appointment.

**Note: A voice mail message is not an acceptable form of cancellation. Please use the Internet, automated telephone system (IVR), or call PSI and speak to a Customer Service Representative.**

### SCHEDULING A RE-EXAMINATION

In order to retest, you must re-register following the steps for registration and scheduling as outlined earlier. You may re-register over the Internet, telephone or by mail. Once registered, you can reschedule for your re-examination.

### MISSED APPOINTMENT OR LATE CANCELLATION

Your registration will be invalid, you will not be able to take the examination as scheduled, and you will forfeit your examination fee, if you:

- Do not cancel your appointment 2 days before the schedule examination date;
- Do not appear for your examination appointment;
- Arrive after examination start time;
- Do not present proper identification when you arrive for the examination.

### SPECIAL EXAMINATION ARRANGEMENTS

All examination centers are equipped to provide access in accordance with the Americans with Disabilities Act (ADA) of 1990, and every reasonable accommodation will be made in meeting a candidate's needs. Applicants with disabilities or those who would otherwise have difficulty taking the examination must fill out the form at the end of this Candidate Information Bulletin and fax to PSI (702) 932-2666.

### EXAMINATION SITE CLOSING FOR AN EMERGENCY

In the event that severe weather or another emergency forces the closure of an examination site on a scheduled examination date, your examination will be rescheduled. PSI personnel will attempt to contact you in this situation. However, you may check the status of your examination schedule by calling (800) 733-9267. Every effort will be made to reschedule your examination at a convenient time as soon as possible. You may also check our website at [www.psiexams.com](http://www.psiexams.com).

### VETERAN PREFERENCE POINTS

1. Georgia law (General Provisions Volume 30, Title 43-1-9 (1)(2)(3)) provides that veterans meeting certain conditions are eligible for the addition of five or ten percentage points to their examination scores.
2. To qualify, veterans must have served for a minimum of one year in active duty status, and must have served during a period of conflict or war for a minimum of 90 days. The law provides that you may also qualify for veterans preference points if you were "discharged for injury or illness incurred in [the] line of duty...if [your] disability is rated at 10 percent or above at the time of taking the examination."



To apply for Veterans' Preference Points candidates must submit a copy of their DD-214 form and documentation of disability if applicable, to the Board office at the time of application.

If you have been approved for Veteran Preference Points, you will receive a final score report which from the Board office once your scores have been received.

## EXAMINATION SITE LOCATIONS

The PSI examinations are administered at the examination centers listed below:

### PSI Atlanta

Circle 75 Office Park  
1000 Circle 75 Parkway, Suite 720  
Atlanta, GA 30339

*From I-285 Bypass N, take exit- Exit 51B- toward Chattanooga/Greenville. Merge onto I-285 N. Take the Cobb Pkwy / US-41 exit- Exit 19- toward Dobbins ARB. Turn Left onto Cobb Pkwy SE / US-41 N / GA-3 N. Turn slight right onto Circle 75 Pkwy SE.*

*From the North of Atlanta (I-75 Southbound) exit onto Cobb Parkway and then turn right onto Circle 75 Parkway.*

*From I-285 Southbound take exit 20 and stay right to exit onto Cobb Parkway and then go right onto Circle 75 Parkway.*

*From the Atlanta and South of Atlanta (I-75 N), take exit 259B (this exit is a 270 degree turn). Stay right to exit onto Cobb Parkway.*

*From 285 Northbound, take exit directly onto Cobb Parkway but at Exit 19 and go left toward Circle 75 and turn right.*

*You must park on Level P-2 in the parking deck.*

### PSI Macon

3902 Northside Dr, Suite C5  
Macon, GA 31210

*From the North  
Take I-75 South to exit 169. Turn left onto Arkwright Road.*

*Turn right at the second traffic light. Turn left at Ashley Park Office Building (where 2 American Flags hang). You must enter and park from the rear of building.*

*From the South*

*Take I-75 North to exit 169. Turn onto missing Arkwright Road. Turn right at the second traffic light. Turn left at Ashley Park Office Building (where 2 American Flags hang).*

*You must enter and park from the rear of building.*

### PSI Tifton

251 Southwell Blvd. Suite A  
Tifton, GA 31794

*I-75 S / GA-401 S. Take the Southwell Blvd exit- Exit 59. Turn Left onto CR-204 / Southwell Blvd. Continue to follow Southwell Blvd.*

## REPORTING TO THE EXAMINATION SITE

On the day of the examination, you should arrive at least 30 minutes before your appointment. This extra time is for sign-in and identification. *If you arrive late, you may not be admitted to the examination site and you will forfeit your examination registration fee.*

### REQUIRED IDENTIFICATION AT EXAMINATION SITE

*You must provide 2 forms of identification. One must be a VALID form of government issued identification (driver's license, state ID, passport), which bears your signature and has your photograph. The second ID must have your signature and preprinted legal name. All identification provided must match the name on the Examination Registration Form and your Registration Confirmation Notice.*

If you cannot provide the required identification, you must call (800) 733-9267 at least 3 weeks prior to your scheduled appointment to arrange a way to meet this security requirement. *Failure to provide all of the required identification at the time of the examination without notifying PSI is considered a missed appointment, and you will not be able to take the examination.*

### SECURITY PROCEDURES

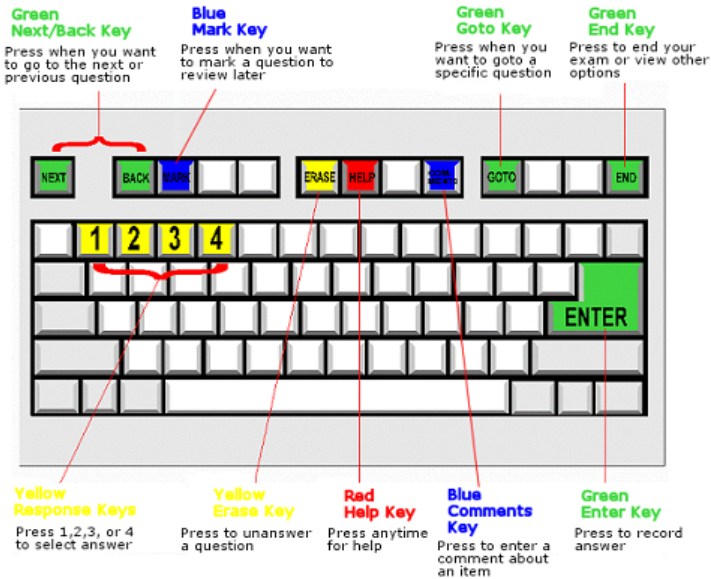
The following security procedures will apply during the examination:

- NO conversing or any other form of communication among candidates is permitted once you enter the examination area.
- Please be advised that children, cell phones, pagers, cameras, programmable electronic devices and recording devices of any kind are NOT allowed to enter PSI testing centers. Additionally, **NO personal items are to enter the testing centers.** PSI will not be responsible for any personal items, and suggests that you leave such items in another safe place, of your choosing.
- Only non-programmable calculators that are silent, battery-operated, do not have paper tape printing capabilities, and do not have a keyboard containing the alphabet will be allowed in the examination site.
- No smoking, eating, or drinking will be allowed at the examination site.
- You may not exit the building during the examination.
- Copying or communicating examination content is a violation of PSI security policy and the State Law. Either one may result in the disqualification of examination results and may lead to legal action.



## TAKING THE EXAMINATION BY COMPUTER

Taking the PSI examination by computer is simple. You do not need any computer experience or typing skills. You will use fewer keys than you use on a touch-tone telephone. All response keys are colored and have prominent characters. An illustration of the special keyboard is shown here. You may also use the mouse.



### IDENTIFICATION SCREEN

You will be directed to a semiprivate testing station to take the examination. When you are seated at the testing station, you will be prompted to confirm your name, identification number, and the examination for which you are registered.

### TUTORIAL

Before you start your examination, an introductory tutorial to the computer and keyboard is provided on the computer screen. The time you spend on this tutorial, up to 15 minutes, DOES NOT count as part of your examination time. Sample questions are included following the tutorial so that you may practice using the keys, answering questions, and reviewing your answers.

One question appears on the screen at a time. During the examination, minutes remaining will be displayed at the top of the screen and updated as you record your answers.

### EXAMINATION QUESTION EXAMPLE

During the examination, you should press 1, 2, 3, or 4 to select your answer or press "MARK" to mark it for later review. You should then press "ENTER" to record your answer and move on to the next question. A sample question display follows:



**IMPORTANT:** After you have entered your responses, you will later be able to return to any question(s) and change your response, provided the examination time has not run out.

### PRETEST ITEMS

In addition to the number of questions per examination, a small number of five to ten "pretest" questions may be administered to candidates during the examinations. These questions will not be scored and the time taken to answer them will not count against examination time. The administration of such non-scored experimental questions is an essential step in developing future licensing examinations.

### EXAMINATION REVIEW

PSI, in cooperation with the Georgia Professional Licensing Board, will be consistently evaluating the examination being administered to ensure that the examination accurately measures competency in the required knowledge areas. While taking the examination, examinees will have the opportunity to provide comments on any questions, by using the comments key on the keyboard. These comments will be analyzed by PSI examination development staff. PSI does not respond to individuals regarding these comments, all substantive comments are reviewed. **This is the only review of examination materials available to candidates.**

## SCORE REPORTING

Your score will be given to you immediately following completion of the examination. The following summary describes the score reporting process:

- **On screen** - your score will appear immediately on the computer screen. This will happen automatically at the end of the time allowed for the examination; if you are using review features, you will be able to obtain your score immediately when you indicate that you have finished and would like to see your results.
  - If you **pass**, you will immediately receive a successful notification.
  - If you **do not pass**, you will immediately receive an unsuccessful notification on the screen along with a diagnostic report indicating your strengths and weaknesses by examination type. Registration forms for submittal to PSI to retake the examination will be available at the examination site.



- **On paper** - an official score report will be printed at the examination site.

### DUPLICATE SCORE REPORTS

You may request a duplicate score report at [www.psiexams.com](http://www.psiexams.com) or you can mail a request to PSI.

## TIPS FOR PREPARING FOR YOUR LICENSE EXAMINATION

The following suggestions will help you prepare for your examination.

- Planned preparation increases your likelihood of passing.
- Start with a current copy of this Candidate Information Bulletin and use the examination content outline as the basis of your study.
- Read study materials that cover all the topics in the content outline.
- Take notes on what you study. Putting information in writing helps you commit it to memory and it is also an excellent business practice. Underline or highlight key ideas that will help with a later review.
- Discuss new terms or concepts as frequently as you can with colleagues. This will test your understanding and reinforce ideas.
- Your studies will be most effective if you study frequently, for periods of about 45 to 60 minutes. Concentration tends to wander when you study for longer periods of time.

## SAMPLE QUESTIONS

The following questions are intended to help you become familiar with some of the types of questions you may find on the examination. The questions are the multiple-choice type, and you are to select the one *best* answer of those presented. These sample questions do not represent the full range of content or difficulty levels contained in the actual examination.

1. If notified of an individual practicing landscape architecture without a license, the Georgia State Board of Landscape Architects may
  - a. refuse to grant a future license to the individual
  - b. issue a cease and desist order against the individual
  - c. impose a fine not to exceed \$100.00
  - d. administer a published, public reprimand
2. Water infiltration rates in the Coastal Plain of Georgia \_\_\_\_\_ rates in the Piedmont of Georgia.
  - a. are faster than
  - b. are slower than
  - c. are about the same as
  - d. cannot be compared to

3. <<SLIDE OF *Itea virginica* - Virginia Sweetspine SHOWN ON SCREEN>>

The best-suited cultural practice for this plant would be which of the following?

- a. Allow to maintain natural form
- b. Shearing
- c. Espalier
- d. Pruning to tree form

## EXAMINATION CONTENT OUTLINE

### GEORGIA STATE COMPONENT EXAMINATION

# of Questions	Time Allowed
75	120 Minutes

### CONTENT OUTLINE

Subject Area	% of Items
Georgia Laws, Rules, and Regulations	25
Georgia Ecosystem and Natural Resources Georgia Water: Quality, Quantity and Use	25
Landscape Plant Materials with Emphasis on Georgia Native Plants	25
Georgia Geology	15
Georgia Climate	10

### REFERENCE LIST

The reference material listed below was used to prepare the questions for this examination, it is not exhaustive. The examination may also contain questions based on trade knowledge or general industry practices

Candidates may use a silent, nonprinting, non-programmable calculator in the examination center.

This examination is CLOSED BOOK.

*The following reference material is not allowed in the examination center:*

#### **EROSION / CONSTRUCTION / STORMWATER**

The Manual for Erosion and Sediment Control in Georgia (5th Edition) as published by the Georgia Soil and Water Conservation Commission(GASWCC) [http://www.gaepd.org/Documents/esc\\_manual.html](http://www.gaepd.org/Documents/esc_manual.html)

The Field Manual for Erosion and Sediment Control in Georgia (5th Edition) as published by the GASWCC. [http://s150378756.onlinehome.us/docs/field\\_manual\\_4ed.pdf](http://s150378756.onlinehome.us/docs/field_manual_4ed.pdf)

Erosion Prevention and Sediment Control in Georgia as produced by the Erosion and Sedimentation Control Technical Study Committee (DIRT II Panel) [www.gaswcc.georgia.gov](http://www.gaswcc.georgia.gov) Click on "Documents" and then Click on "Dirt 2 Booklet"

Land Development Provisions to Protect Georgia Water Quality prepared for GA Dept Of Natural Resources EPD, prepared by The School of Environmental Design, UGA (Oct. 1997). [http://www.uga.edu/sed/publications/other/ga\\_development\\_water\\_quality\\_study.pdf](http://www.uga.edu/sed/publications/other/ga_development_water_quality_study.pdf)

State of Georgia Department of Natural Resources Environmental Protection Division "National Pollutant Discharge Elimination System" (NPDES) General Permit No. GAR 100001 (Stand Alone), GAR 100002 (Infrastructure) and GAR 100003 (Common Development) [www.gaswcc.georgia.gov](http://www.gaswcc.georgia.gov) Click on "Documents" and then Click on "N"



For reference use on NPDES ES&PC plan preparation refer to U.S. EPA 832-R-92-005 "Storm Water Management for Construction Activities - Developing Pollution Prevention Plans and Best Management Practices" <http://cfpub.epa.gov/npdes> Click on "Stormwater Qualifying Local Programs"

Georgia Stormwater Management Manual (volume 2) technical handbook (first edition August 2001) as available from the Atlanta Regional Commission [www.georgiastormwater.com](http://www.georgiastormwater.com)

#### PLANT MATERIAL

"Landscape Plant Materials for Georgia" as published by the Cooperative Extension Service, University of Georgia, College of Agriculture  
<http://pubs.caes.uga.edu/caespubs/pubs/pdf/B625.pdf>

"Poisonous Plants of the Southern United States" as published by the Cooperative Extension Service, University of Georgia, College of Agriculture  
<http://pubs.caes.uga.edu/caespubs/pubs/ForSale.html>

#### LAWS AND RULES

Laws Governing the Practice of Landscape Architects in Georgia (O.C.G.A. 43-23) and Rules of the Board (Chapter 310-1 through 310-11) [www.sos.state.ga.us/plb/landscape](http://www.sos.state.ga.us/plb/landscape) Click on "Board Rules" and "Georgia Laws"

Georgia Safe Dams Act O.C.G.A. 12-5-370 and Rule 391-3-8  
[www.gaepd.org](http://www.gaepd.org) Click on "Rules and Laws", then "State Environmental Laws", then "Safe Dams Act".  
[www.georgiastormwater.com/vol2/H.pdf](http://www.georgiastormwater.com/vol2/H.pdf)

Georgia Rules and Regulations for Individual Sewage Disposal Systems  
<http://rules.sos.state.ga.us/docs/290/5/59/03.PDF> or  
[www.weblife.org/humanure](http://www.weblife.org/humanure) Click on "Appendix 3"

Georgia Accessibility Code "Access to and use of Public Facilities by Handicapped Persons" Georgia Safety Fire Commissioner Rules and Regulations, OCGA 120-3-20  
<http://www.inscomm.state.ga.us/DOCUMENTS/120-3-20.pdf>







All examination centers are equipped to provide access in accordance with the Americans with Disabilities Act (ADA) of 1990. Applicants with disabilities or those who would otherwise have difficulty taking the examination may request special examination arrangements.

Candidates who wish to request special arrangements because of a disability should fax this form and supporting documentation to PSI at (702) 932-2666.

Requirements for special arrangement requests

You are required to submit documentation from the medical authority or learning institution that rendered a diagnosis. Verification must be submitted to PSI on the letterhead stationery of the authority or specialist and include the following:

- Description of the disability and limitations related to testing
- Recommended accommodation/modification
- Name, title and telephone number of the medical authority or specialist
- Original signature of the medical authority or specialist

Date \_\_\_\_\_

Legal Name: \_\_\_\_\_  
Last Name First Name

Address: \_\_\_\_\_  
Street Citv. State. Zip Code

Telephone : (\_\_\_\_\_) \_\_\_\_\_ - \_\_\_\_\_ (\_\_\_\_\_) \_\_\_\_\_ - \_\_\_\_\_  
Home Work

Email Address: \_\_\_\_\_

Check any special arrangements you require (requests must concur with documentation submitted):

- |   |   |
|---|---|
| <input type="checkbox"/> Reader (as accommodation for visual impairment or learning disability) | <input type="checkbox"/> Extended Time (Additional time requested: _____) |
| <input type="checkbox"/> Large-Print written examination  | <input type="checkbox"/> Other _____                                      |

- Complete and fax this form, along with supporting documentation, to (702) 932-2666.
- After 4 business days, please call 800-733-9267 x6750 and leave a voice message.
- PSI Special Accommodations will call you back to schedule the examination within 48 hours.

DO NOT SCHEDULE YOUR EXAMINATION UNTIL THIS DOCUMENTATION HAS BEEN RECEIVED AND PROCESSED BY PSI SPECIAL ACCOMMODATIONS.



PSI Services, LLC  
3210 E Tropicana  
Las Vegas, NV 89121

FIRST CLASS MAIL

